

WELCOME

TOURNAMENT TEAMS, COACHES, CHEER-LEADERS, OFFICIALS, AND FANS.

ECHOES

Vol. X, No. 6 10 March 1958
Yokohama American High School, Yokohama, Japan

YO-HI HOST TO —

FAR EAST BASKETBALL TOURNAMENT

IN FRYAR GYM

EIGHT TEAMS AND CHEERLEADERS VIE FOR TROPHIES

The tenth annual Far East Command High School Invitational basketball Tournament will be held in Yokohama's Fryar Gym on March 12, 13, 14, and 15. The tournaments, which began in 1949, have alternated between Yokohama and Tokyo.

Junior Class Operates Refreshment Stand; Other Eating Places Listed

The YO-HI junior class will operate a refreshment stand at Fryar gym throughout the tournament.

If you are interested in eating something more substantial, catch a bus in front of the YMCA. This will take you to the PX where you can patronize the Teenage Club or the Snack Bar.

The Colonial Club, just behind Fryar Gym, has special arrangements for a good snack or a dinner.

Buses to return to Fryar Gym which leave from the PX are the Kishine and Zama Hospital. The Kishine bus leaves at 20 minutes after the hour or 10 minutes before the hour. The Zama bus leaves every hour and a half. The Kishine bus leaves the YMCA on the hour and on the half hour.

Below is a map of the bus routes and eating places.

TEAMS PAIRED BY DRAWINGS

The drawing for the starting games was held at the offices of Mr. Thomas Petrus, at the Cotton Building in Yokohama on February 18.

Two drawings were held, both from a hat. The first was to determine who would draw first for the actual positions. Two sets of numbers were placed in the hat and the team winning the first drawing drew a number.

This was then repeated for the Class B teams.

The drawings resulted in the following pairing of team: Class A, Okinawa vs. YO-HI; Narimasu vs. ASIJ; Class B, Misawa vs. Kisarazu; Itazuki vs. Ashiya.

A Reminder:

A country is judged by its people. A school is judged by its student body.

FIVE TROPHIES WILL BE AWARDED

All-Tournament Team, Most Valuable Players to be Chosen

The Far East Command tenth annual basketball tournament will award five trophies, Class A and Class B Champions and Runners-up and a Cheerleading trophy.

The trophies were purchased from the sale of tickets by the Yokohama High School, host school.

An All-Tournament team will be selected from Class A and Class B. Col. Robert Cliffe, commanding officer of Regional Camp Yokohama, will present silver charms to the Class B and gold charms to the Class A selected teams.

From each class, a most valuable player will be chosen.

The best showing cheerleaders will receive a trophy to be presented by Mrs. E. D. Easton, Jr.

Superintendent of Schools Harry Frey will present trophies to the champions

Four class "A" and four class "B" schools compose the eight-team 1958 tournament. Also competing for a trophy are the cheerleaders.

The class "A" teams are Yokohama High, Narimasu High (Tokyo), Okinawa, and A.S.I.J. (Megro).

The class "B" teams are Misawa High, Kisarazu High, Itazuki High, and Ashiya High.

The past winners of the F. E. C. Basketball tourney are:

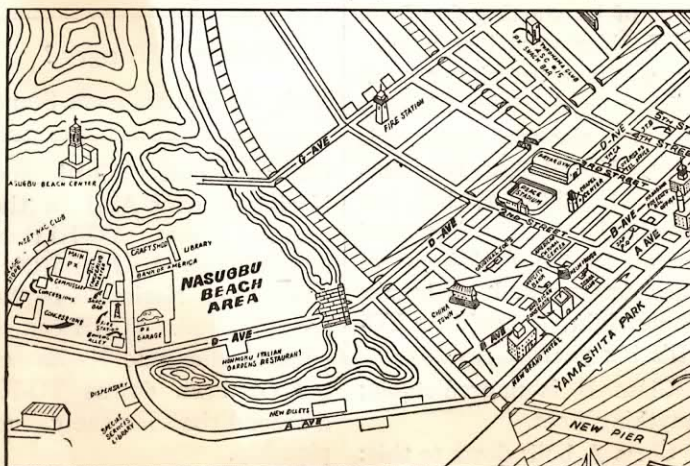
- 1949 - Narimasu
- 1950 - A.S.I.J.
- 1951 - A.S.I.J.
- 1952 - A.S.I.J.
- 1953 - Narimasu
- 1954 - Narimasu
- 1955 - Narimasu
- 1956 - Okinawa
- 1957 - Nagoya (A), and Misawa (B)

YO-HI SAYS HELLO

To All Visitors

and runners-up in each class.

All awards will be made after the last championship game.



YO-HI Echoes

Tournament Edition

Editor.....Fred MacLeod
 Assistant.....Rex Gallaher
 Cheerleaders...Sandy Street
 (Photos courtesy of annual staff.)

Cheerleaders Compete in Second Contest

This tournament is the tenth annual basketball tournament, but only the second annual cheerleading contest. The cheering competition was begun last year, as an experiment, to give the cheerleaders as well as the boys on the teams a goal to work for.

Last year the Narimasu cheerleaders with Joanie Williamson as captain took the first trophy.

The following schools will be represented in the 1958 competition: Yokohama, Narimasu, A.S.I.J., Misawa, Ashiya, and Okinawa.

Don't YOU Be Tagged "The Reason Why"

—Sandy Street

"Can't we?"

"Why not? You're just trying to spoil our fun!"

Sound familiar? Well, if not, take a peek into the future—will school be let out for the tournaments next year? It really depends only on YOU!

Getting out of school is kicks, sure, but why ruin it for next year? Take it easy, huh?

Just a softening of the unnecessary loudness, a few more students showing up for the games, a bit more sportsmanship, or an extra amount of courtesy can turn the tide.

Remember that you are ladies and gentlemen, all of you, and don't be sad and sorry around this time next year.



Competing for the cheerleader's trophy is the peppy YO-HI cheerleading squad: Michelle Reilly, Sandy Street, Barbara Boyle, Karen Lawson, Mary Benson, Barbara Sherman, Vicki Yesser, and, in front, Jan Stetler, captain. Barbara Sherman has returned to the States and Karen Stetler (left) has taken her place.



Karen Stetler

SUPPORT YOUR TEAM

—F. MacLeod

The high school basketball tournament is just as American as baseball and hot dogs. In the States every team looks forward to the district, regional, or state basketball tournament.

A tournament is a very funny thing; the outcome is almost always a surprise. The winning or losing of a tournament depends on many things: the mental condition of the players, the physical condition of the players, and often on the backing given them by their school, cheerleaders, and pep clubs. A well organized pep club can sometimes do more for a team than lots of rest.

To help your team really have a chance on the court, come out and give the cheerleaders a hand.

The Devil's Furnace

—Rex G.

*Clean off the crystal ball,
 Let the chips fall,
 Okinawa's Dragons are hot,
 All others in the pot,
 But when things finally boil down,
 Narimasu will look like a clown;
 It will be tight,
 YO-HI is full of fight.
 Mustangs have a lot of cheer.
 (Better luck next year!)*

The teams look like this to me: Okinawa is back with four of its starting five from 1957. Narimasu lost a starter and another player is out with a hand injury. ASIJ is just an also-ran again this year. YO-HI lost two starters at mid-year, but has regained stature fast and looms as the dark-horse of the tournament. If the breaks come right, it could be YO-HI's big year.

Class B is unpredictable; anything goes.

Class A boils down to this:

1957-58 BASKETBALL SEASON RECORD

Won 13 — Lost 1

The record:

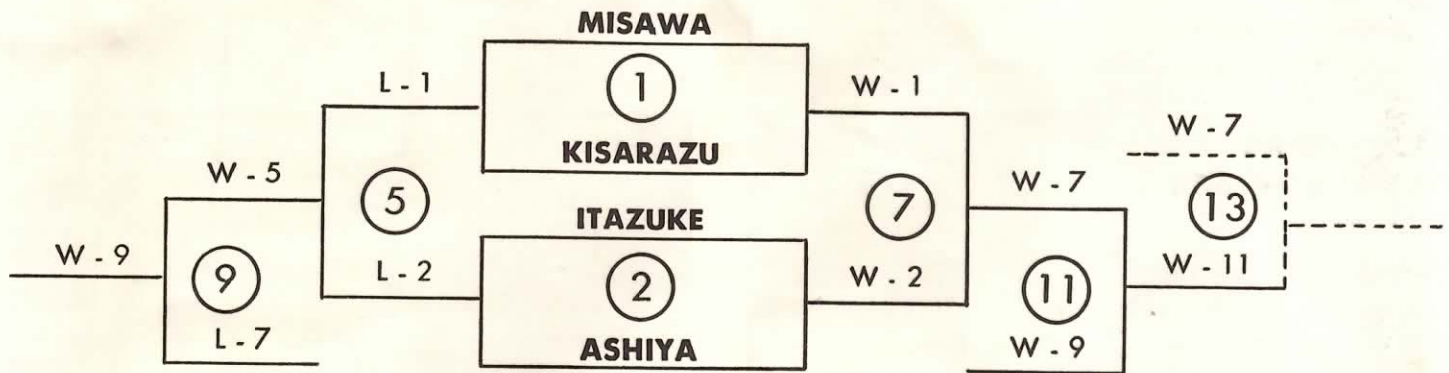
YO-HI	Opponent and Score
43	— 40 Narimasu
54	— 45 Kitano
69	— 27 Kei-Hoku
58	— 28 Meiji Gakuin
104	— 51 Sei Gakuin
64	— 24 Aoyama
56	— 33 A.S.I.J.
34	— 68 Narimasu
52	— 40 Kitano
2	— 0 Kei-Hoku
2	— 0 Meiji Gakuin
93	— 43 Sei Gakuin
61	— 15 Aoyama
21	— 20 A.S.I.J.

Thirsty? Hungry?

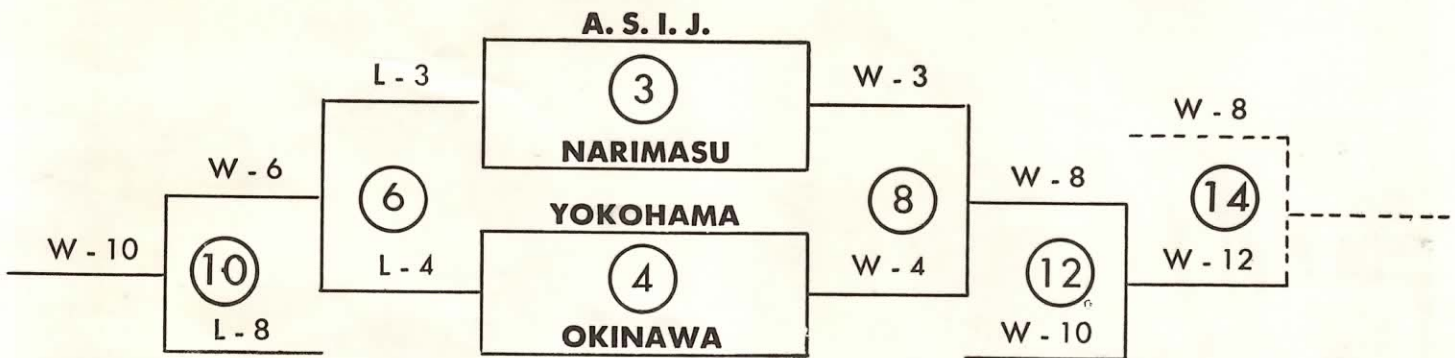
Visit the Refreshment Stand

Okinawa over YO-HI and Narimasu over ASIJ in the opening games. YO-HI then eliminates ASIJ and Okinawa beats Narimasu in the second round. YO-HI comes back to eliminate Narimasu, but Okinawa downs YO-HI a second time for the championship.

Class B



Class A



A Double Elimination Tournament

The 1958 F.E.C. Invitational Basketball Tournament will be what is known as a Double Elimination Tournament. This means that a team has to lose two games before being dropped. Last year Nagoya lost its first game but came back, beat all of the other teams, and won the championship.

TOURNAMENT SCHEDULE

Wednesday, 12 March		Friday, 14 March	
Game #1	1330	Game #9	1330
Game #2	1500	Game #10	1500
Game #3	1900	Game #11	1900
Game #4	2030	Game #12	2030
Thursday, 13 March		Saturday, 15 March	
Game #5	1330	Game #13 (IF NEEDED)	1900
Game #6	1500	Game #14 (IF NEEDED)	2030
Game #7	1900		
Game #8	2030		

Student Council Host to Dance

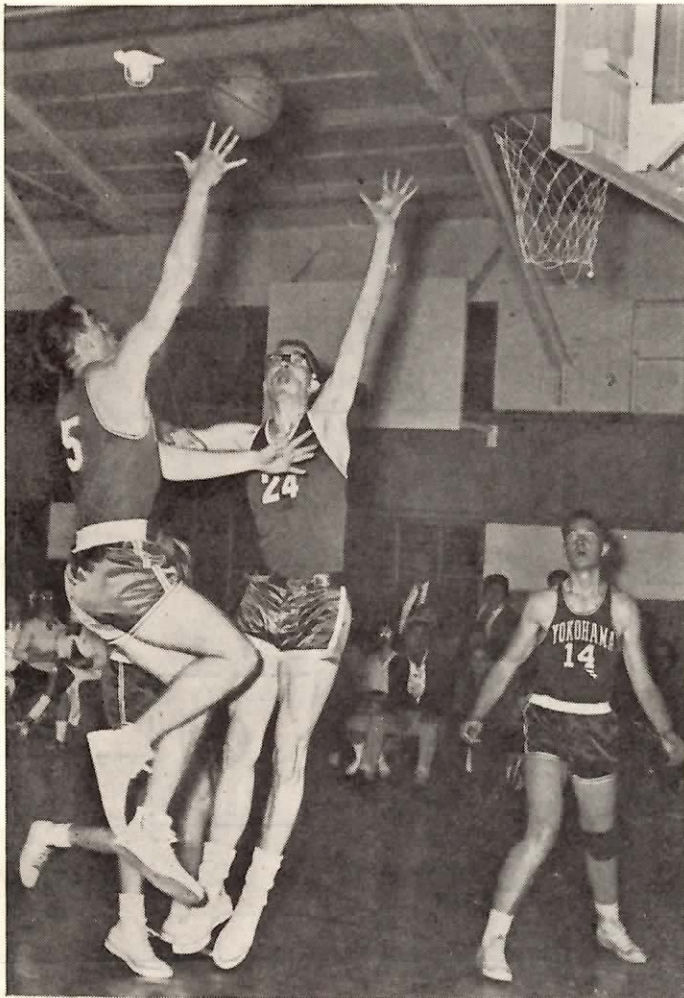
The YO-HI student council will be host to the teams and cheerleaders at the annual tournament dance on Friday evening. The dance will be held at the YO-HI gym from 9:30 to 11:30.

The dance will be open to all holders of season tickets to the tournament. Music will be furnished by a band.

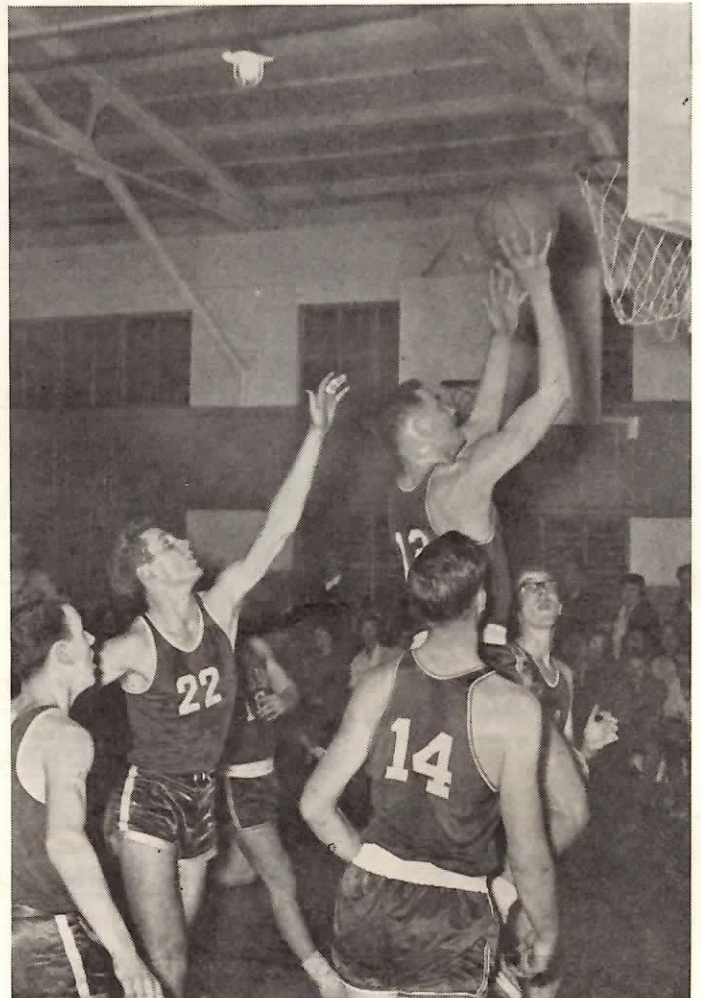
TOURNAMENT RESULTS:

Game 1	_____ Misawa	vs	_____ Kisarazu	Game 8	_____	vs	_____
Game 2	_____ Itazuke	vs	_____ Ashiya	Game 9	_____	vs	_____
Game 3	_____ A.S.I.J.	vs	_____ Narimasu	Game 10	_____	vs	_____
Game 4	_____ Yokohama	vs	_____ Okinawa	Game 11	_____	vs	_____
Game 5	_____	vs	_____	Game 12	_____	vs	_____
Game 6	_____	vs	_____	Game 13	_____	vs	_____
Game 7	_____	vs	_____	Game 14	_____	vs	_____

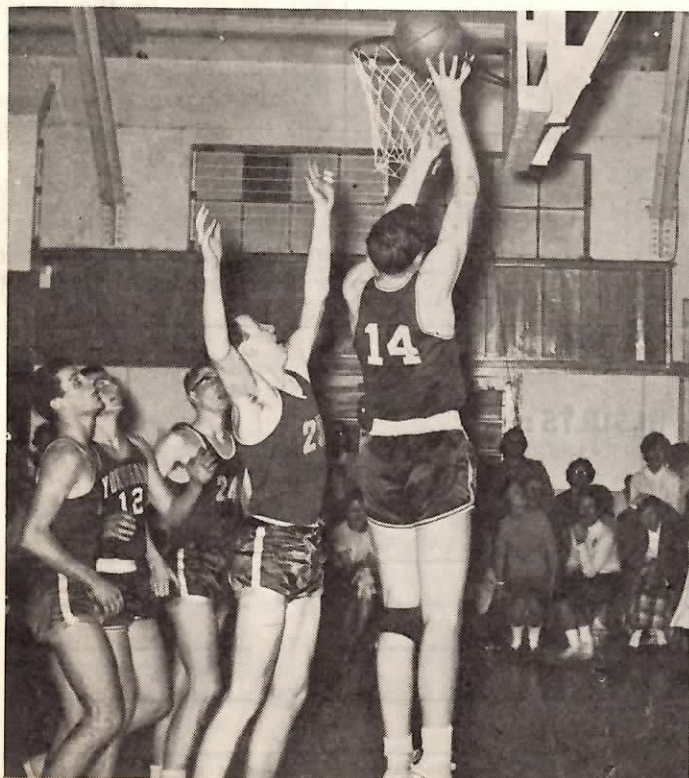
HIGHLIGHTS OF THE NARIMASU-YOKOHAMA GAME AT YO-HI



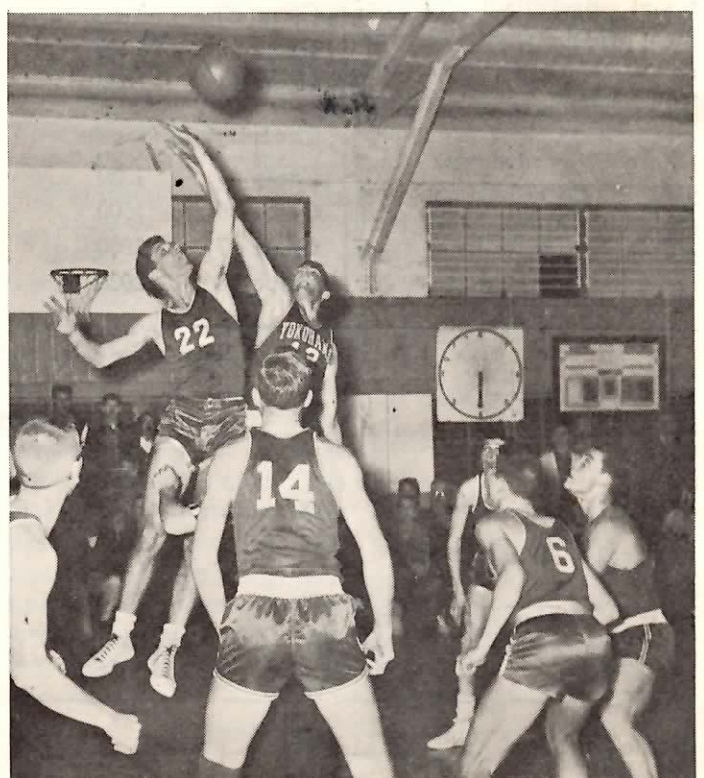
Narimasu's Solverud (24) tries in vain as YO-HI's George Casey (5) puts it in. Mason (14) is waiting for a possible rebound.



YO-HI's Jim Cunningham (13) goes up for a jump shot as Narimasu's Stagg (22) and Solverud (24) wait to clear the boards. YO-HI's alert Mason (14) and Reifenrath (10) give Cunningham some support.



Olin Mason (14) goes up for the shot.



Cunningham (12) and Stagg (22) jump for the tip.